

## Descrizione tecnica | Technical specification

Scocca e braccioli in tecnopolimero rinforzato. Rivestimento in rete traspirante, composizione 70% nylon e 30% poliestere, disponibile nel colore nero e bianco. Oscillante integrato nella struttura con movimento permanente. Base a 5 razze in nylon PA6 caricato al 30% con fibra vetro, colore nero, con anello di rinforzo in acciaio, certificata ANSI-BIFMA. Ruote in nylon Ø 50 mm frenate.

Base a 4 razze in alluminio pressofuso lucidato con piedini in nylon.

Anello poggiatesta regolabile in altezza in nylon nero.

*Supporting frame and armrests in reinforced techno-polymer. Seat and backrest with mesh finish, made of 70% nylon and 30% polyester, available in white and black colours. Free-tilting mechanism Integrated inside techno-polymer frame.*

*5-star base in black nylon PA6 with 30% fibre glass and central metal insert, ANSI-BIFMA tested. Black nylon pivoting auto braking castors Ø 50 mm.*

*4-stars die-cast polished aluminium base with nylon gliders.*

*Back nylon foot-rest adjustable in height.*

---

## Normative | Standards

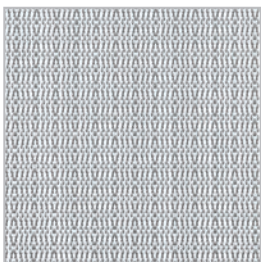


## Garanzia | Warranty

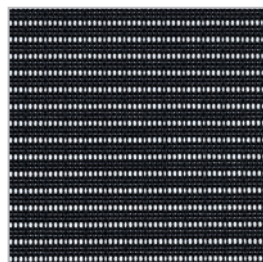


---


## Rete | Mesh





W





B

	<b>Dimensioni - Size:</b> H 108 ÷ 118 Hs 44 ÷ 54 Hb 65 L 70 Ls 50 P 70 Box Kg: 17 Box volume m <sup>3</sup> : 0,35 Qt. x collo - Q.ty x pcs: 1	Schienale alto in rete, braccioli in nylon nero, base a 5 razze Ø 700 mm in nylon nero, ruote Ø 50 mm frenate <b>Specificare il colore della rete</b> <i>High mesh backrest, black nylon armrests, 5-star black nylon base Ø 700 mm, auto-bracking nylon castors Ø 50 mm</i> <b>Specify mesh colour</b>
	<b>TN001B</b>	Meccanismo di oscillazione continuo <i>Permanent tilting mechanism</i>


	<b>Dimensioni - Size:</b> H 91 ÷ 101 Hs 44 ÷ 54 Hb 65 L 70 Ls 50 P 70 Box Kg: 15 Box volume m <sup>3</sup> : 0,33 Qt. x collo - Q.ty x pcs: 1	Schienale basso in rete, braccioli in nylon nero, base a 5 razze Ø 700 mm in nylon nero, ruote Ø 50 mm frenate <b>Specificare il colore della rete</b> <i>Low mesh backrest, black nylon armrests, 5-star black nylon base Ø 700 mm, auto-bracking nylon castors Ø 50 mm</i> <b>Specify mesh colour</b>
	<b>TN002B</b>	Meccanismo di oscillazione continuo <i>Permanent tilting mechanism</i>

	<b>Dimensioni - Size:</b> H 91 ÷ 101 Hs 44 ÷ 54 L 70 Ls 50 P 70 Box Kg: 14 Box volume m <sup>3</sup> : 0,32 Qt. x collo - Q.ty x pcs: 1	Schienale basso in rete, senza braccioli, base a 5 razze Ø 700 mm in nylon nero, ruote Ø 50 mm frenate <b>Specificare il colore della rete</b> <i>Low mesh backrest, without armrests, 5-star black nylon base Ø 700 mm, auto-bracking nylon castors Ø 50 mm</i> <b>Specify mesh colour</b>
	<b>TN003B</b>	Meccanismo di oscillazione continuo <i>Permanent tilting mechanism</i>

	<b>Dimensioni - Size:</b> H 91 ÷ 101 Hs 44 ÷ 54 L 70 Ls 50 P 70 Box Kg: 14 Box volume m <sup>3</sup> : 0,32 Qt. x collo - Q.ty x pcs: 1	Schienale basso in rete, senza braccioli, base a 4 razze Ø 690 mm in alluminio lucidato, piedini <b>Specificare il colore della rete</b> <i>Low mesh backrest, without armrests, 4-star polished die-cast aluminium base Ø 690 mm, gliders</i> <b>Specify mesh colour</b>
	<b>TN004B</b>	Meccanismo di oscillazione continuo <i>Permanent tilting mechanism</i>

	<b>Dimensioni - Size:</b> H 91 ÷ 101 Hs 44 ÷ 54 Hb 65 L 98 Ls 50 P 69 Box Kg: 15 Box volume m <sup>3</sup> : 0,33 Qt. x collo - Q.ty x pcs: 1	Schienale basso in rete, braccioli in nylon nero, base a 4 razze Ø 690 in alluminio lucidato, piedini <b>Specificare il colore della rete</b> <i>Low mesh backrest, black nylon armrests, 4-star polished die-cast aluminium base Ø 690 mm, gliders</i> <b>Specify mesh colour</b>
	<b>TN005B</b>	Meccanismo di oscillazione continuo <i>Permanent tilting mechanism</i>

# TEKNO

	<b>Dimensioni - Size:</b> <b>H</b> 116 ÷ 141 <b>Hs</b> 69 ÷ 94 <b>L</b> 70 <b>Ls</b> 50 <b>P</b> 70 <b>Box Kg:</b> 17 <b>Box volume m³:</b> 0,32 <b>Qt. x collo - Q.ty x pcs:</b> 1	Schienale basso in rete, senza braccioli, poggipiedi regolabile, base a 5 razze Ø 700 mm in nylon nero, piedini <b>Specificare il colore della rete</b> <i>Low mesh backrest, without armrests, footrest, 5-star black nylon base Ø 700 mm, gliders</i> <b>Specify mesh colour</b>
	<b>TN006B</b>	Meccanismo di oscillazione continuo <i>Permanent tilting mechanism</i>

	<b>Dimensioni - Size:</b> <b>H</b> 116 ÷ 141 <b>Hs</b> 69 ÷ 94 <b>Hb</b> 90 <b>L</b> 70 <b>Ls</b> 50 <b>P</b> 70 <b>Box Kg:</b> 17 <b>Box volume m³:</b> 0,32 <b>Qt. x collo - Q.ty x pcs:</b> 1	Schienale basso in rete, braccioli in nylon nero, poggipiedi regolabile, base a 5 razze Ø 700 mm in nylon nero, piedini <b>Specificare il colore della rete</b> <i>Low mesh backrest, black nylon armrests, footrest, 5-star black nylon base Ø 700 mm, gliders</i> <b>Specify mesh colour</b>
	<b>TN007B</b>	Meccanismo di oscillazione continuo <i>Permanent tilting mechanism</i>

